

Massachusetts Organization of Nurse Executives
The Bridge to Nursing Leadership
Annual New and Emerging Leader Seminar
April 7-8, 2009
Conference Center at Waltham Woods

Agenda

Day 1 - Tuesday, April 7, 2009

- 7:30 – 8:30 *Registration & Continental Breakfast, Exhibits*
- 8:30 – 8:45 **MONE: *The Resource for Nurse Leaders***
Speaker: Sharon Gale, MSN, RN
Executive Director, Massachusetts Organization of Nurse Executives
- 8:45 – 10:00 **Leadership for Exemplary Patient Care and Nursing Practice**
Speaker: Marita Prater, MS, RN
Director of Nursing/Nursing QI, Sturdy Memorial Hospital
- 10:00 – 10:30 *Networking Break, Exhibits*
- 10:30 – 11:45 **The Nurse Leader's Role in Information Technology**
Speaker: Denise Goldsmith, RN, MS, MPH
Manager, Nursing Informatics, Brigham and Women's Hospital
- 11:45 – 12:45 *Buffet Luncheon, Networking, Exhibits*
- 12:45 – 2:00 **Understanding and Leading a Multigenerational Workforce**
Speaker: Rosalie Tyrrell, RN, MS
Professional Development Manager, Massachusetts General Hospital
- 2:00 – 2:15 *Networking Break, Exhibits*
- 2:15 – 3:30 **What Healthcare Leaders Need to Know about Finance...
Or the Money *Behind* the Money**
Speaker: Kathleen Bower, DNSc, RN, FAAN
Principal and Co-Owner, The Center for Case Management
- 3:30 Summary, 5.0 Contact Hours and Adjourn

Massachusetts Organization of Nurse Executives is an approved provider of continuing nursing education by the Massachusetts Association of Registered Nurses, Inc. an accredited approver by the American Nurses Credentialing Center's Commission on Accreditation.

Massachusetts Organization of Nurse Executives

The Bridge to Nursing Leadership

Agenda

Day 2 - Wednesday, April 8, 2009

- 7:30 – 8:30 *Registration & Continental Breakfast, Exhibits*
- 8:30 – 8:45 **Welcome and Networking**
- 8:45 – 10:00 **What’s possible? Courageous Leadership, Right Where You Are**
Speaker: Mary Connaughton, RN, MS
Principal, Connaughton Consulting
- 10:00 – 10:30 *Networking Break, Exhibits*
- 10:30 – 11:45 **Building a Culture of Mutual Respect**
Speaker: Martha Griffin, PhD, CS, RN
Director, Nursing Education & Research, Boston Medical Center
- 11:45 – 12:45 *Networking Luncheon, Exhibits*
- 12:45 – 2:00 **The Art of Negotiation: An Essential Leadership Skill**
Speaker: Maureen Sroczynski, RN, MS
President & CEO, Farley Associates, Inc
- 2:00 – 2:15 *Networking Break, Exhibits*
- 2:15 – 3:30 **It’s Lonely at the Top – Strategies for Survival**
Panel Discussion
- 3:30 Summary, 5.0 Contact Hours and Adjourn

Directions: Conference Center at Waltham Woods, 860 Winter Street, Waltham, MA 02451-1411
Phone: 1-800-322-2303

From the North (Burlington/Lexington)

South on Route 128/I-95 to Exit 27B (Winter Street). When coming off the exit, stay in the far right lane and follow Winter Street. (See “All” below.)

From the South (Dedham/Newton)

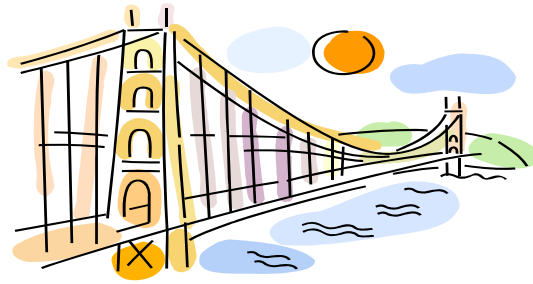
North on Route 128/I-95 to Exit 27B (Wyman Street/Winter Street). At light turn right onto Wyman. Remain in the right lane and bear right at the yield sign onto Winter Street. Remain in the right lane and cross back over Route 128. (See “All” below.)

ALL: Remain in the far right lane through two sets of lights. (Pass the Double Tree Hotel on your left.) Travel around the Cambridge Reservoir (on right) for approximately .5 mile (pass Astra Zeneca on left). Turn left at granite sign announcing HealthPoint and Waltham Woods Corporate Center. Travel up the hill following the green signs to Waltham Woods Corporate Center for approximately .3 mile to a second granite sign for Waltham Woods (“860-890 Winter Street”) on the left. Immediately after sign, turn left into the parking for the Massachusetts Medical Society. Please park near the Conference Center side entrance.

There are several hotels nearby.

Check on line at: www.metrotravelguide.com/hotels/Waltham/MA/USA

Massachusetts Organization of Nurse Executives is an approved provider of continuing nursing education by the Massachusetts Association of Registered Nurses, Inc. an accredited approver by the American Nurses Credentialing Center’s Commission on Accreditation.



Registration: MONE Annual Leadership Seminar

Tuesday & Wednesday, April 7-8, 2009

Waltham Woods/Massachusetts Medical Society, Waltham, MA

Registration choices, check below

(Please fax a copy of the completed registration form to MONE at 781-272-3505 before sending it to Accounts Payable.)

Non-members sponsored by an MONE member may pay the member rate.

Sponsored by: _____

MONE Member registration received by March 24, 2009 1 day - \$210 ~ 2 days - \$395

MONE Member registration received after March 24, 2009 1 day - \$265 ~ 2 days - \$450

Non-members registration received by March 24, 2009 1 day - \$275 ~ 2 days - \$495

Non-member registration received after March 24, 2009 1 day - \$375 ~ 2 days - \$595

Tuesday, April 7 _____ **Wednesday, April 8** _____ **Both days** _____

Payment Method: *(Please do not staple checks.)*

Check: Please mail check by March 24, 2009 to: **MONE • 101 Cambridge Street, Suite 110, Burlington, MA 01803**

Credit Card: () MC () Visa Account # _____

Name on Card _____ Expires / Billing Address Zip Code _____

Name _____ Position _____

Organization _____ Email _____

Address _____

City _____ State _____ Zip _____

(Cancellation policy: Refunds for cancellations received prior to March 24, 2009 are subject to a \$35.00 handling charge. No refund will be given for cancellations received on or after March 24, 2009. Registrations may be faxed to 781-272-3505 or e-mailed to info@massone.org and are subject to the above cancellation policy. "Registered no shows" will be billed. For further information call 781-272-3500.)

Massachusetts Organization of Nurse Executives is an approved provider of continuing nursing education by the Massachusetts Association of Registered Nurses, Inc. an accredited approver by the American Nurses Credentialing Center's Commission on Accreditation.